

Police.uk uses cookies to make the site simpler. [Find out more about cookies](#)

[Home](#) > [Suffolk Constabulary](#) > [Ipswich Central](#) > [Performance](#) >

Compare your area

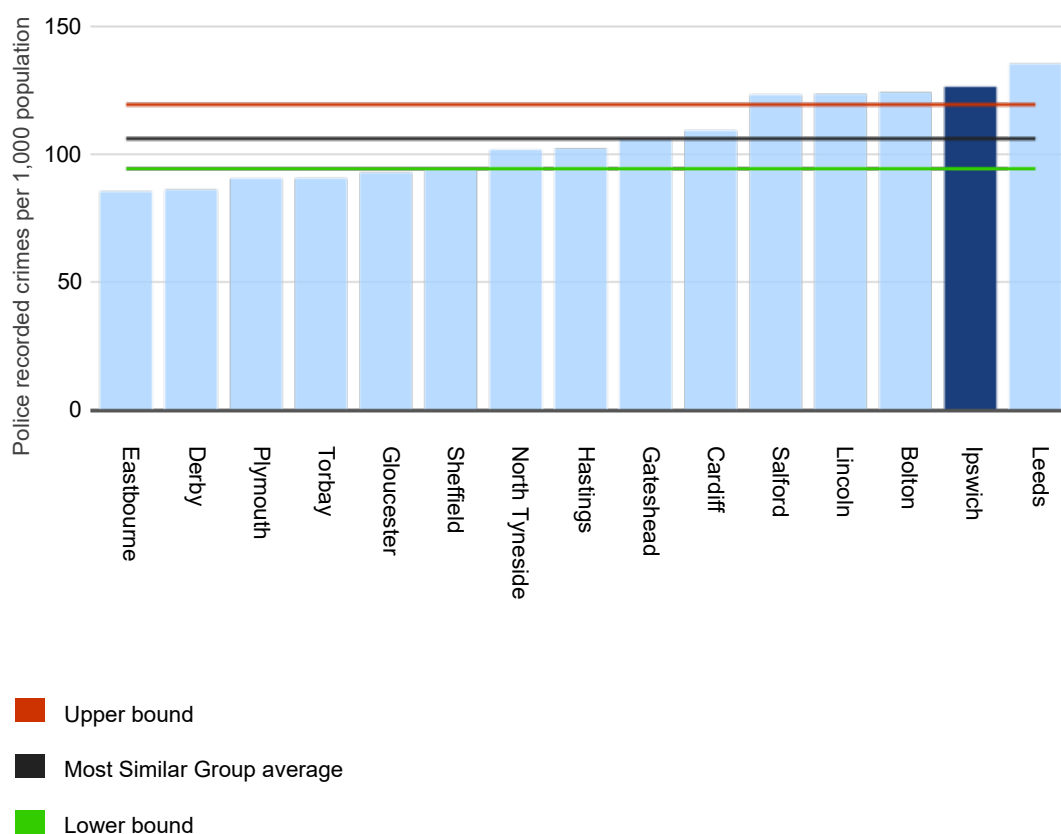
Crime in Ipswich compared with crime in other similar areas

Crime type:

All crime

Update

In the year ending March 2019, the crime rate in Ipswich was higher than the average crime rate across similar areas.



The red and green lines show how far the crime rate would normally vary from the average. Ipswich lies above the red line, so its crime rate is higher than normal for the group.

How to interpret this chart

This chart compares the crime rate in your local area to the average crime rate across similar areas. It shows the total number of crimes over a twelve month period per thousand residents, for the crime type selected.

Where your area lies in relation to the red and green lines is more important than its rank among similar areas. If your area lies between the red and green lines, its crime rate is normal for the group. If your area lies above the red line, its crime rate is higher than normal for the group, and similarly, if your area lies below the green line, its crime rate is lower than normal.

The areas shown in this chart are those that have been assessed to be most similar to your own. However, the circumstances within these areas do still vary and these variations can have an impact on the crime rates observed.

Data bounds	Crime rate
Upper bound	119.07
Most Similar Group average	105.79
Lower bound	94.00

Area	Crime rate
Eastbourne	84.96
Derby	85.73
Plymouth	90.19
Torbay	90.27
Gloucester	92.39
Sheffield	94.32
North Tyneside	101.42
Hastings	101.90
Gateshead	105.69
Cardiff	108.93
Salford	122.90
Lincoln	123.18
Bolton	123.95
Ipswich	126.10
Leeds	134.96

(Source: ONS)

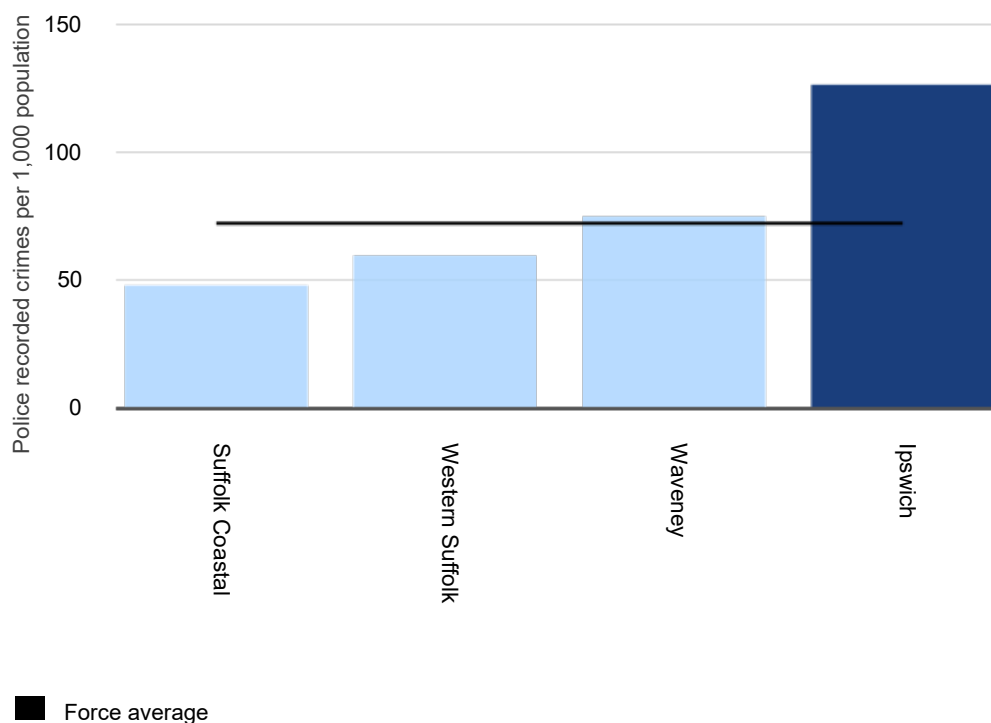
Crime in Ipswich compared with crime in the Suffolk force area

Crime type:

All crime

Update

In the year ending March 2019, the crime rate in Ipswich was higher than average for the Suffolk force area.



How to interpret this chart

This chart compares the crime rate in your local area to the average crime rate across the force area. It shows the total number of crimes over a twelve month period per thousand residents, for the crime type selected.

Area <input type="button" value="v"/>	Crime rate <input type="button" value="v"/>
Suffolk Coastal	47.54
Western Suffolk	59.29
Waveney	74.60
Force average	71.81

Area	Crime rate
Ipswich	126.10
Force average	71.81

(Source: ONS)

Crime changes over time in Ipswich and in the Suffolk force area

Crime type:

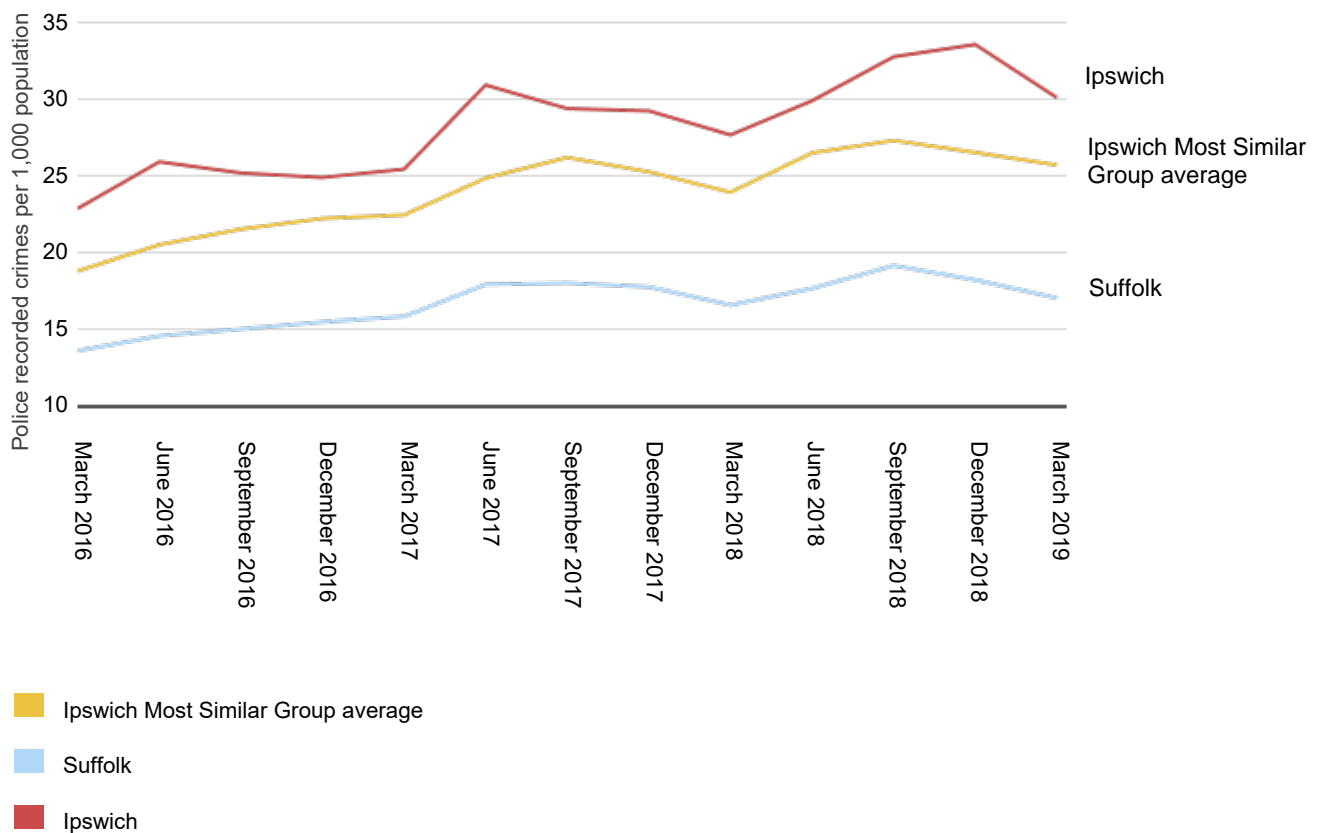
All crime

Update

In the quarter ending March 2019, crime rates were:

- up in Ipswich
- up in the Suffolk force area

compared with the corresponding quarter in 2018.



How to interpret this chart

This chart shows how crime rates in your local area and police force area have changed over time. It also shows how the average crime rates in similar areas to your local area have changed over time.

The chart shows the quarterly crimes per thousand residents, for the crime type selected, over a three year period. Note that some crime types have distinct seasonal patterns and this should be borne in mind when viewing the chart.

Date	Crime rate		
	Ipswich Most Similar Group average	Suffolk	Ipswich
March 2016	18.73	13.53	22.81
June 2016	20.45	14.50	25.86
September 2016	21.47	14.95	25.13
December 2016	22.16	15.41	24.84
March 2017	22.39	15.77	25.38
June 2017	24.80	17.86	30.87
September 2017	26.14	17.95	29.33
December 2017	25.20	17.70	29.18
March 2018	23.87	16.51	27.61
June 2018	26.44	17.60	29.84
September 2018	27.25	19.09	32.71
December 2018	26.46	18.15	33.51
March 2019	25.65	16.97	30.04

(Source: ONS)

[Cookies](#) Powered by data.police.uk

OGI

All content is available under the [Open Government Licence v3.0](#) unless otherwise stated



Home Office