

Compare your area

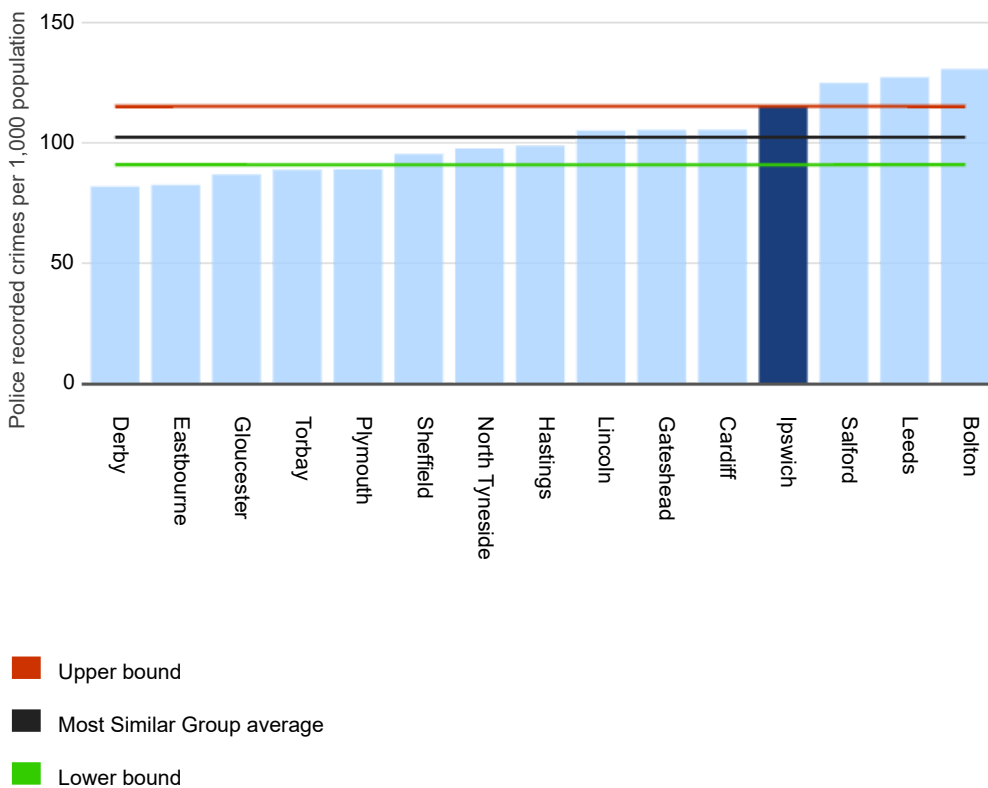
Crime in Ipswich compared with crime in other similar areas

Crime type:

All crime ▼

Update

In the year ending June 2018, the crime rate in Ipswich was higher than the average crime rate across similar areas.



The red and green lines show how far the crime rate would normally vary from the average. Ipswich lies above the red line, so its crime rate is higher than normal for the group.

How to interpret this chart

This chart compares the crime rate in your local area to the average crime rate across similar areas. It shows the total number of crimes over a twelve month period per thousand residents, for the crime type selected.

Where your area lies in relation to the red and green lines is more important than its rank among similar areas. If your area lies between the red and green lines, its crime rate is normal for the group. If your area lies above the red line, its crime rate is higher than normal for the group, and similarly, if your area lies below the green line, its crime rate is lower than normal.

The areas shown in this chart are those that have been assessed to be most similar to your own. However, the circumstances within these areas do still vary and these variations can have an impact on the crime rates observed.

Data bounds	Crime rate
Upper bound	114.91
Most Similar Group average	102.00
Lower bound	90.54

Area 	Crime rate 
Derby	81.50
Eastbourne	82.16
Gloucester	86.49
Torbay	88.43
Plymouth	88.69
Sheffield	95.04
North Tyneside	97.33
Hastings	98.47
Lincoln	104.76
Gateshead	105.04
Cardiff	105.11
Ipswich	115.16
Salford	124.53
Leeds	126.93
Bolton	130.38

(Source: ONS)

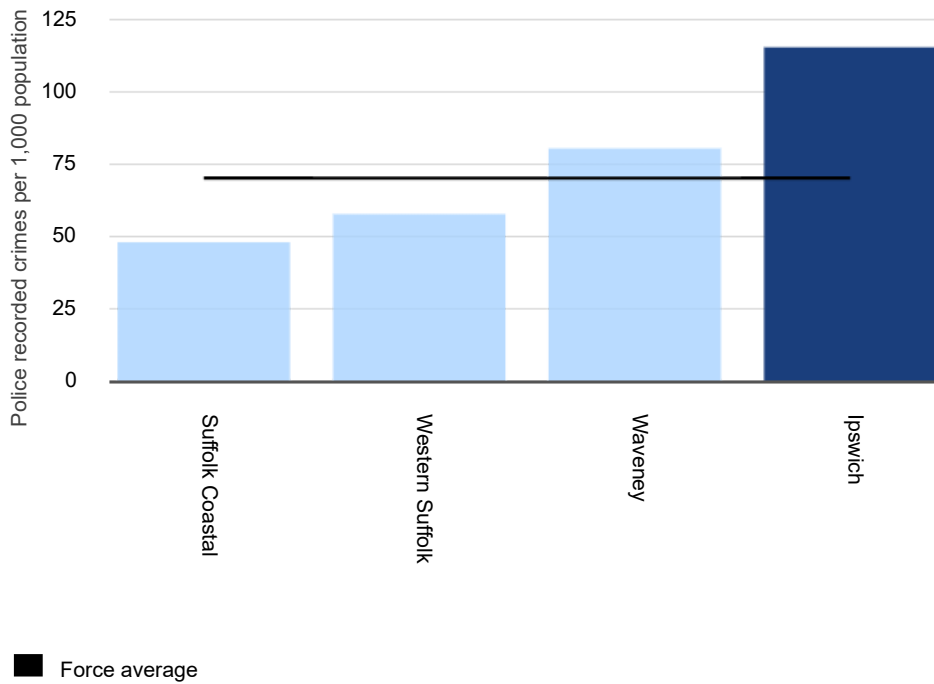
Crime in Ipswich compared with crime in the Suffolk force area

Crime type:

All crime ▼

Update

In the year ending June 2018, the crime rate in Ipswich was higher than average for the Suffolk force area.



How to interpret this chart

This chart compares the crime rate in your local area to the average crime rate across the force area. It shows the total number of crimes over a twelve month period per thousand residents, for the crime type selected.

Area	Crime rate
Suffolk Coastal	47.75
Western Suffolk	57.48
Waveney	80.20
Ipswich	115.16
Force average	69.91

(Source: ONS)

Crime changes over time in Ipswich and in the Suffolk force area

Crime type:

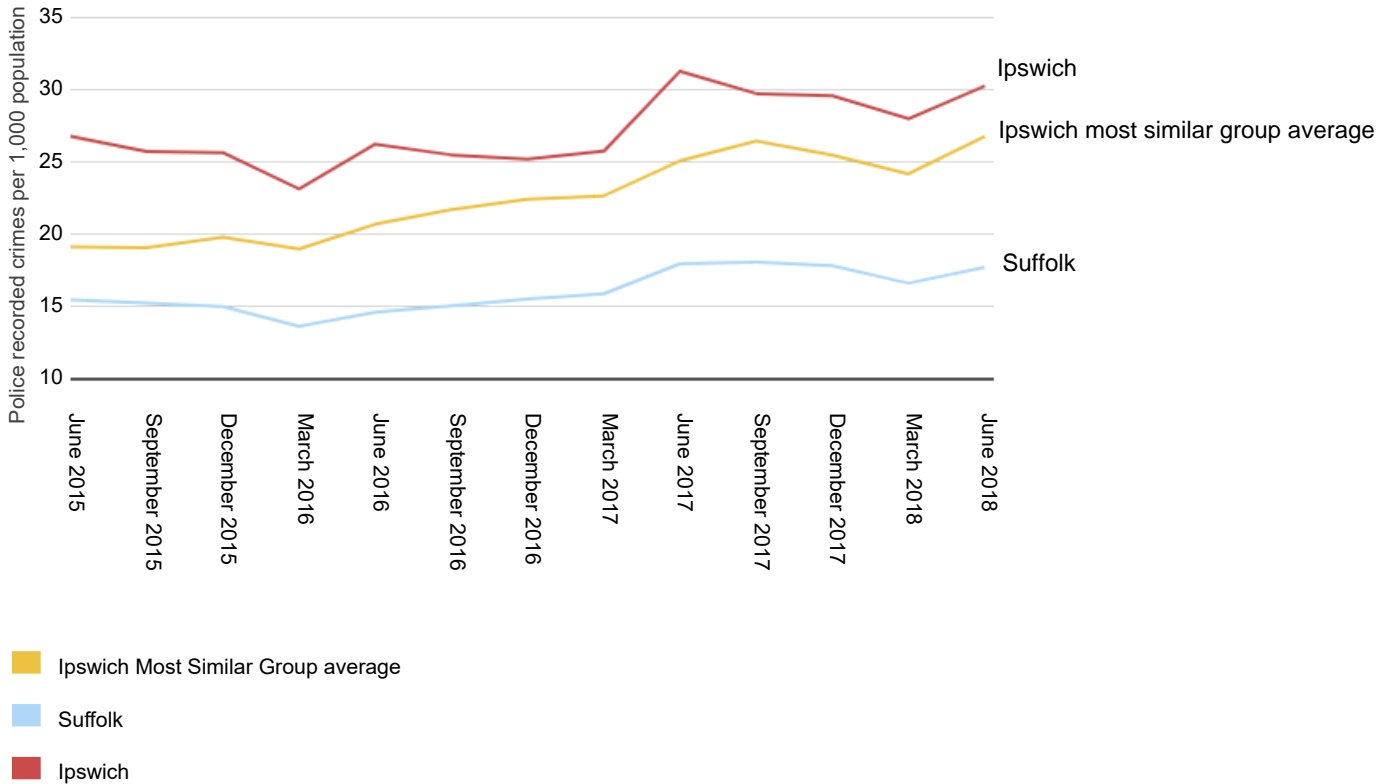
All crime ▼

Update

In the quarter ending June 2018, crime rates were:

- down in Ipswich
- down in the Suffolk force area

compared with the corresponding quarter in 2017.



How to interpret this chart

This chart shows how crime rates in your local area and police force area have changed over time. It also shows how the average crime rates in similar areas to your local area have changed over time.

The chart shows the quarterly crimes per thousand residents, for the crime type selected, over a three year period. Note that some crime types have distinct seasonal patterns and this should be borne in mind when viewing the chart.

Date	Crime rate		
	Ipswich Most Similar Group average	Suffolk	Ipswich
June 2015	19.06	15.40	26.72
September 2015	19.01	15.18	25.66
December 2015	19.71	14.93	25.59
March 2016	18.91	13.56	23.08
June 2016	20.63	14.53	26.17
September 2016	21.64	14.98	25.43

Crime rate

Date	Ipswich Most Similar Group average	Suffolk	Ipswich
December 2016	22.37	15.45	25.13
March 2017	22.59	15.80	25.69
June 2017	25.02	17.89	31.23
September 2017	26.38	17.99	29.68
December 2017	25.41	17.74	29.53
March 2018	24.12	16.54	27.94
June 2018	26.70	17.64	30.20

(Source: ONS)

[Cookies](#) Powered by data.police.uk

OGL

All content is available under the [Open Government Licence v3.0](#) unless otherwise stated


Home Office