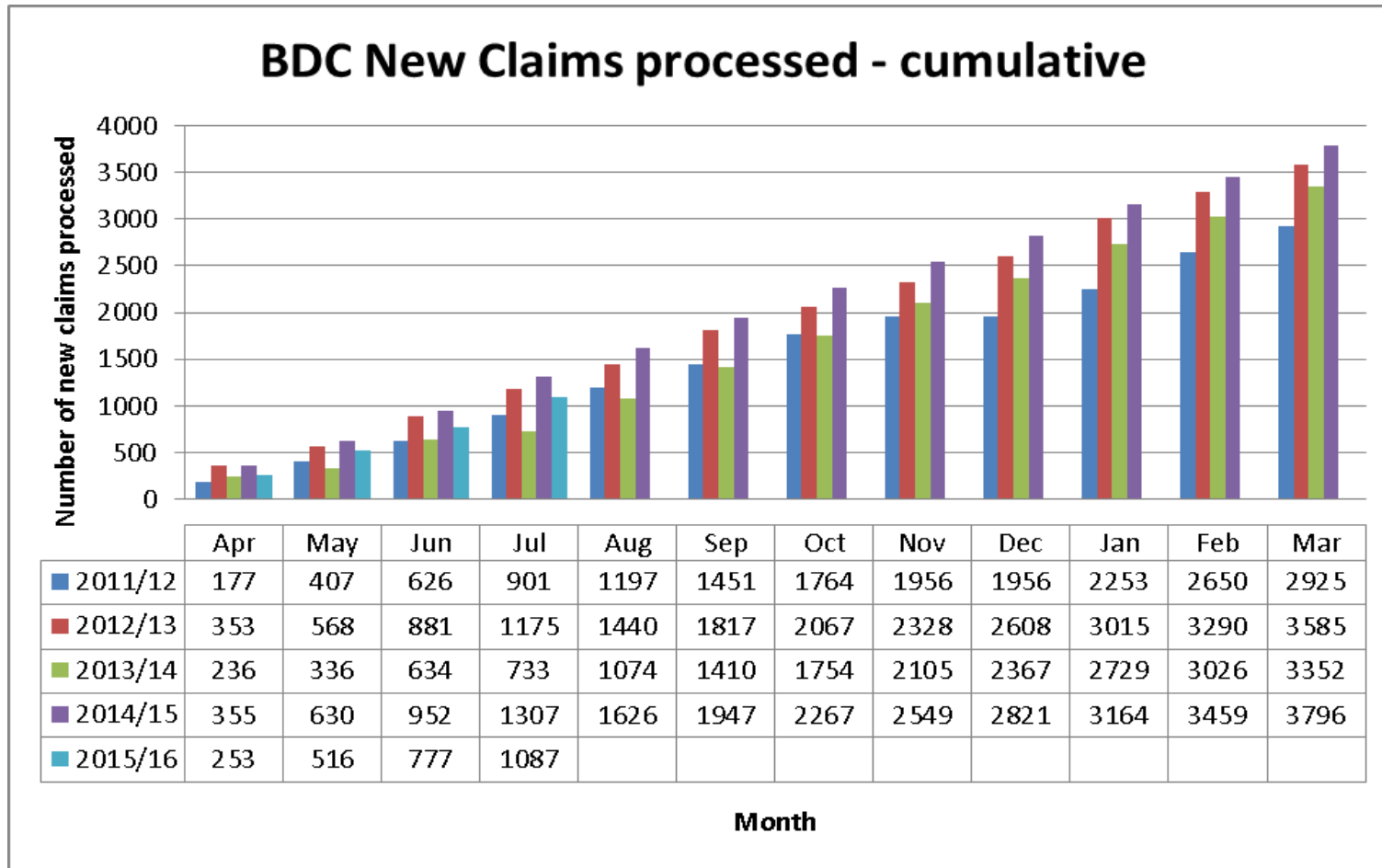
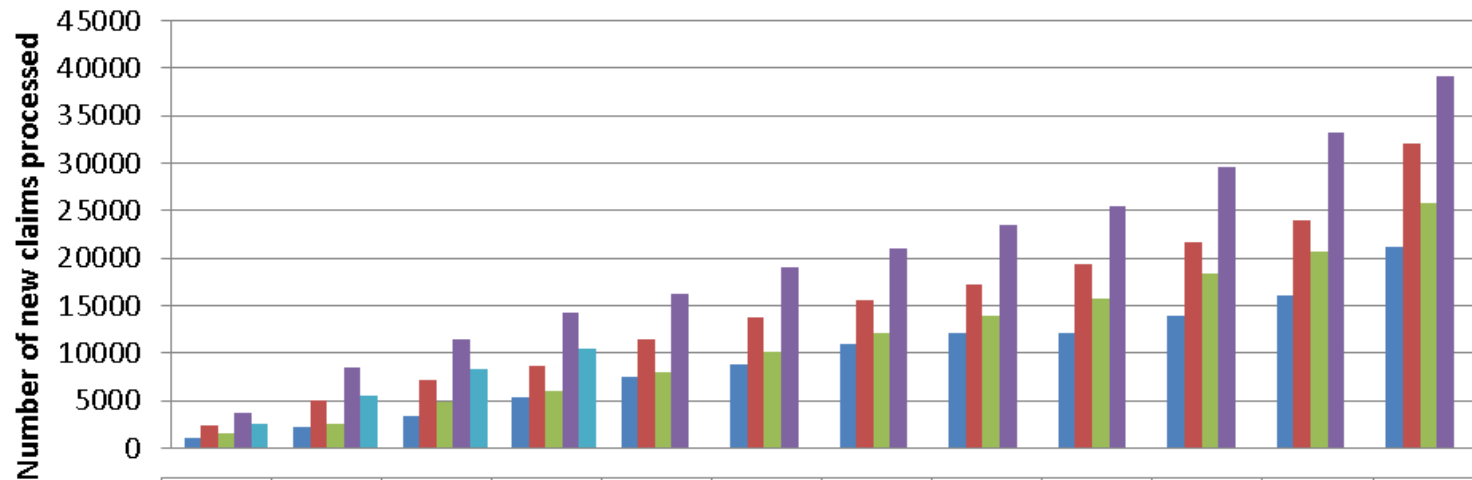


Cumulative New Claims and Changes processed by year by Council – HB and CTR counted separately.



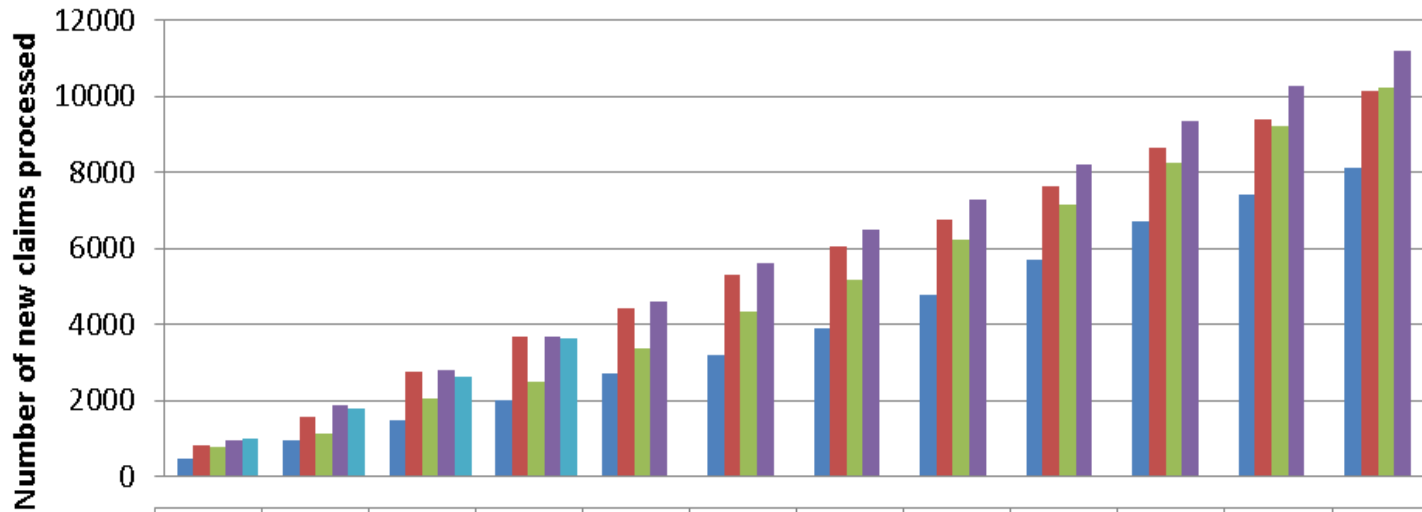
BDC Changes processed - cumulative



	Apr	May	Jun	Jul	Aug	Sep	Oct	Nov	Dec	Jan	Feb	Mar
■ 2011/12	1146	2161	3389	5319	7453	8874	10926	12050	12050	14002	16126	21256
■ 2012/13	2469	5058	7145	8694	11390	13762	15659	17319	19415	21688	24078	32061
■ 2013/14	1645	2554	4936	5995	7959	10071	12142	14013	15769	18319	20633	25848
■ 2014/15	3749	8505	11483	14228	16304	19030	21037	23448	25549	29596	33169	39158
■ 2015/16	2646	5556	8277	10449								

Month

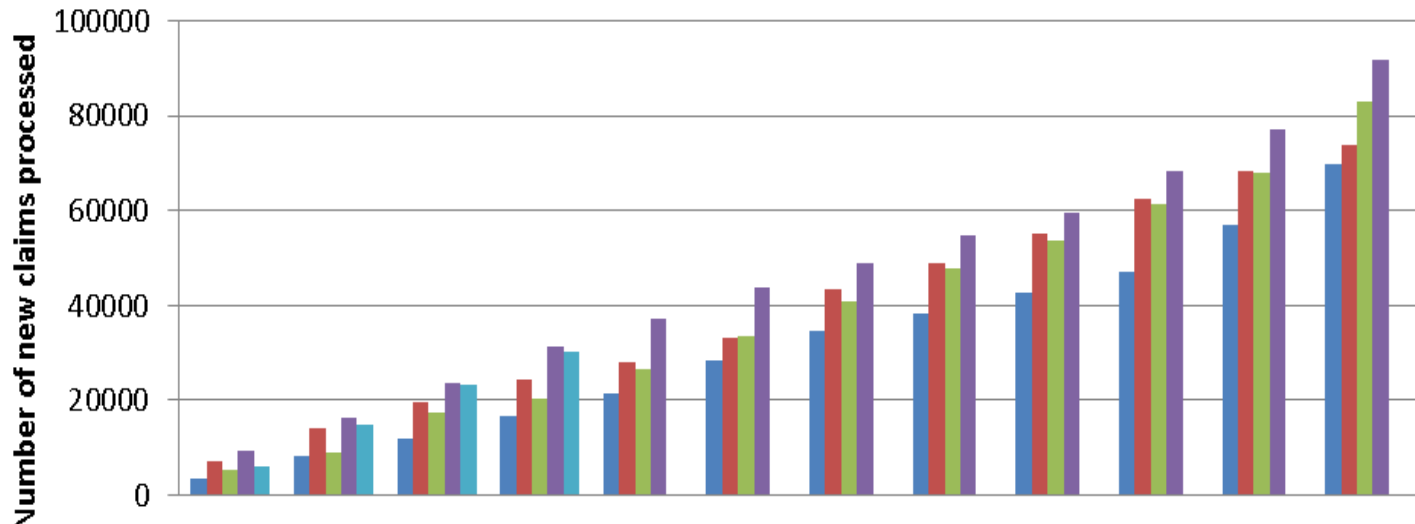
IBC New Claims processed - cumulative



	Apr	May	Jun	Jul	Aug	Sep	Oct	Nov	Dec	Jan	Feb	Mar
■ 2011/12	477	961	1484	2021	2712	3201	3875	4795	5705	6719	7413	8121
■ 2012/13	796	1553	2763	3690	4415	5314	6057	6767	7641	8661	9398	10135
■ 2013/14	782	1137	2054	2483	3363	4317	5186	6206	7145	8254	9195	10225
■ 2014/15	944	1888	2797	3688	4583	5613	6472	7290	8184	9330	10252	11210
■ 2015/16	1004	1804	2621	3636								

Month

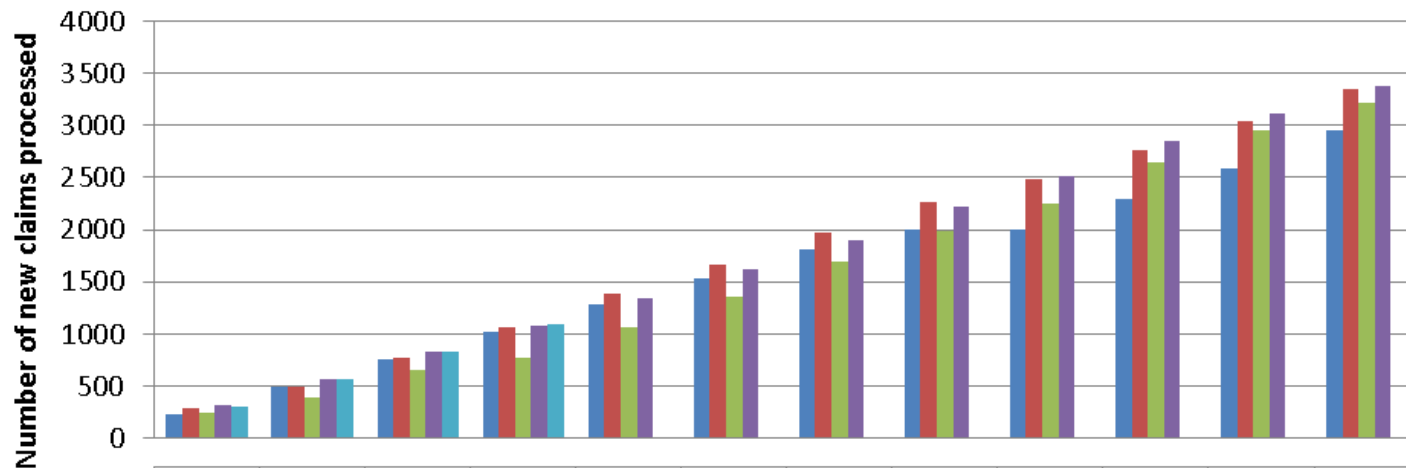
IBC Changes processed - cumulative



	Apr	May	Jun	Jul	Aug	Sep	Oct	Nov	Dec	Jan	Feb	Mar
■ 2011/12	3327	8264	12055	16692	21569	28602	34612	38467	42656	47029	57095	69838
■ 2012/13	7316	14036	19598	24428	28226	33306	43562	49109	55195	62466	68194	73922
■ 2013/14	5184	9025	17357	20519	26647	33382	40705	47860	53714	61330	67882	82886
■ 2014/15	9379	16364	23636	31269	37154	43767	49072	54702	59628	68374	76996	91687
■ 2015/16	6195	15020	23301	30180								

Month

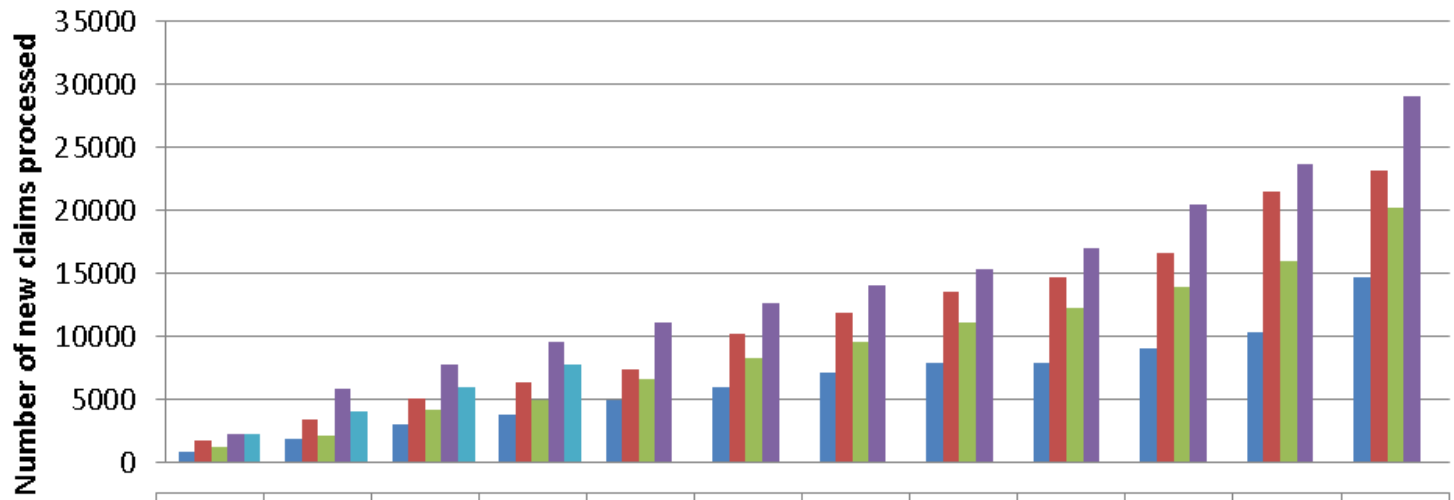
MSDC New Claims processed - cumulative



	Apr	May	Jun	Jul	Aug	Sep	Oct	Nov	Dec	Jan	Feb	Mar
■ 2011/12	226	490	751	1023	1289	1530	1818	1998	1998	2290	2587	2957
■ 2012/13	289	498	767	1057	1384	1659	1977	2266	2483	2759	3046	3355
■ 2013/14	241	387	655	775	1070	1358	1691	1983	2250	2646	2948	3220
■ 2014/15	312	558	822	1077	1335	1616	1892	2217	2519	2855	3113	3385
■ 2015/16	307	559	826	1087								

Month

MSDC Changes processed - cumulative



	Apr	May	Jun	Jul	Aug	Sep	Oct	Nov	Dec	Jan	Feb	Mar
■ 2011/12	857	1871	2959	3766	4941	5974	7120	7956	7956	9030	10294	14638
■ 2012/13	1771	3428	5101	6305	7349	10243	11821	13494	14721	16641	21447	23210
■ 2013/14	1189	2106	4142	4964	6591	8340	9622	11134	12293	13958	15945	20268
■ 2014/15	2314	5827	7772	9504	11085	12704	13997	15375	17009	20463	23630	29011
■ 2015/16	2189	4053	6000	7755								

Month